



Light design: Agua Dulce
Artists: Ale Hop & Laura Robles
Lighting design: Frankling Quintanilla

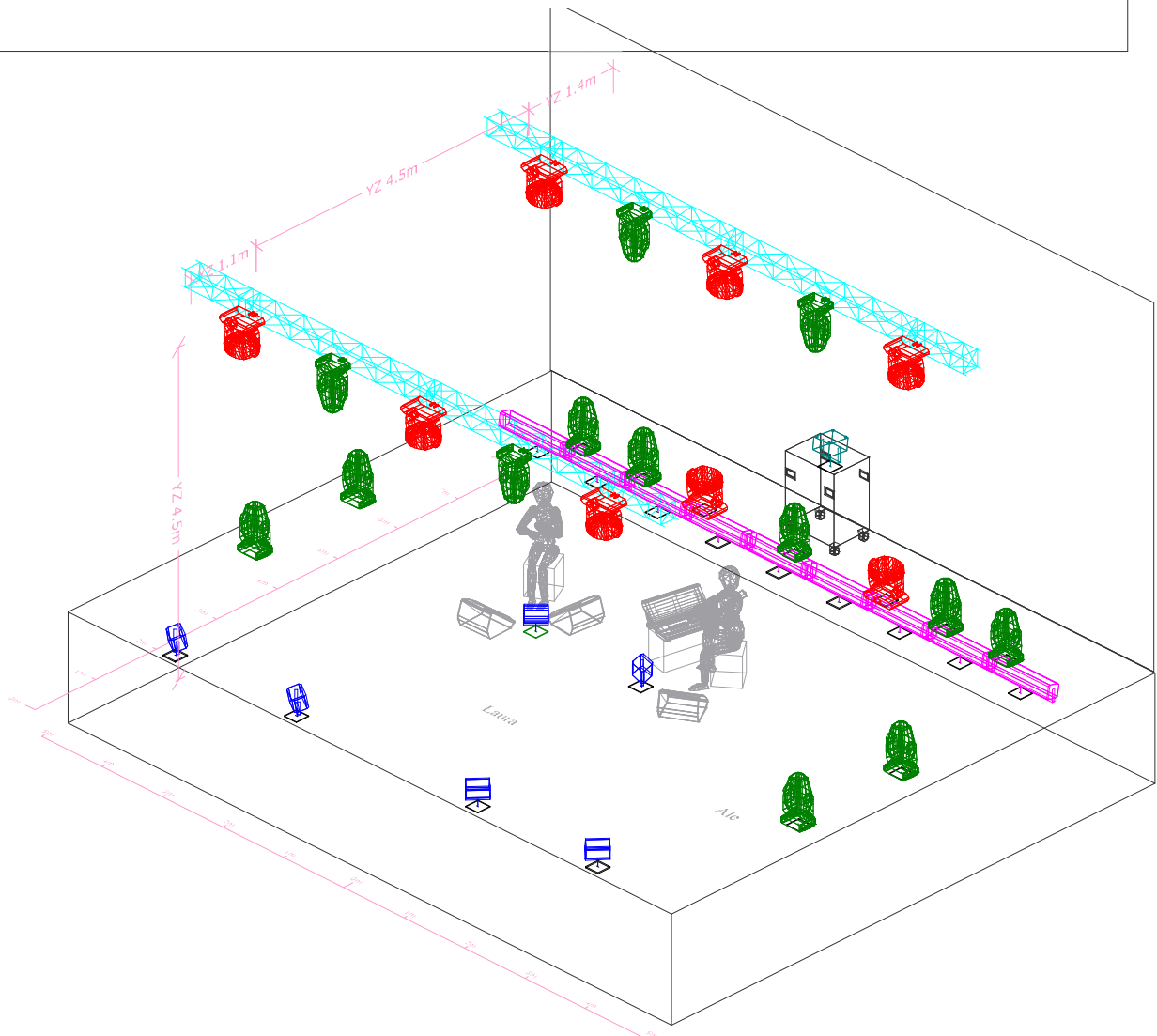
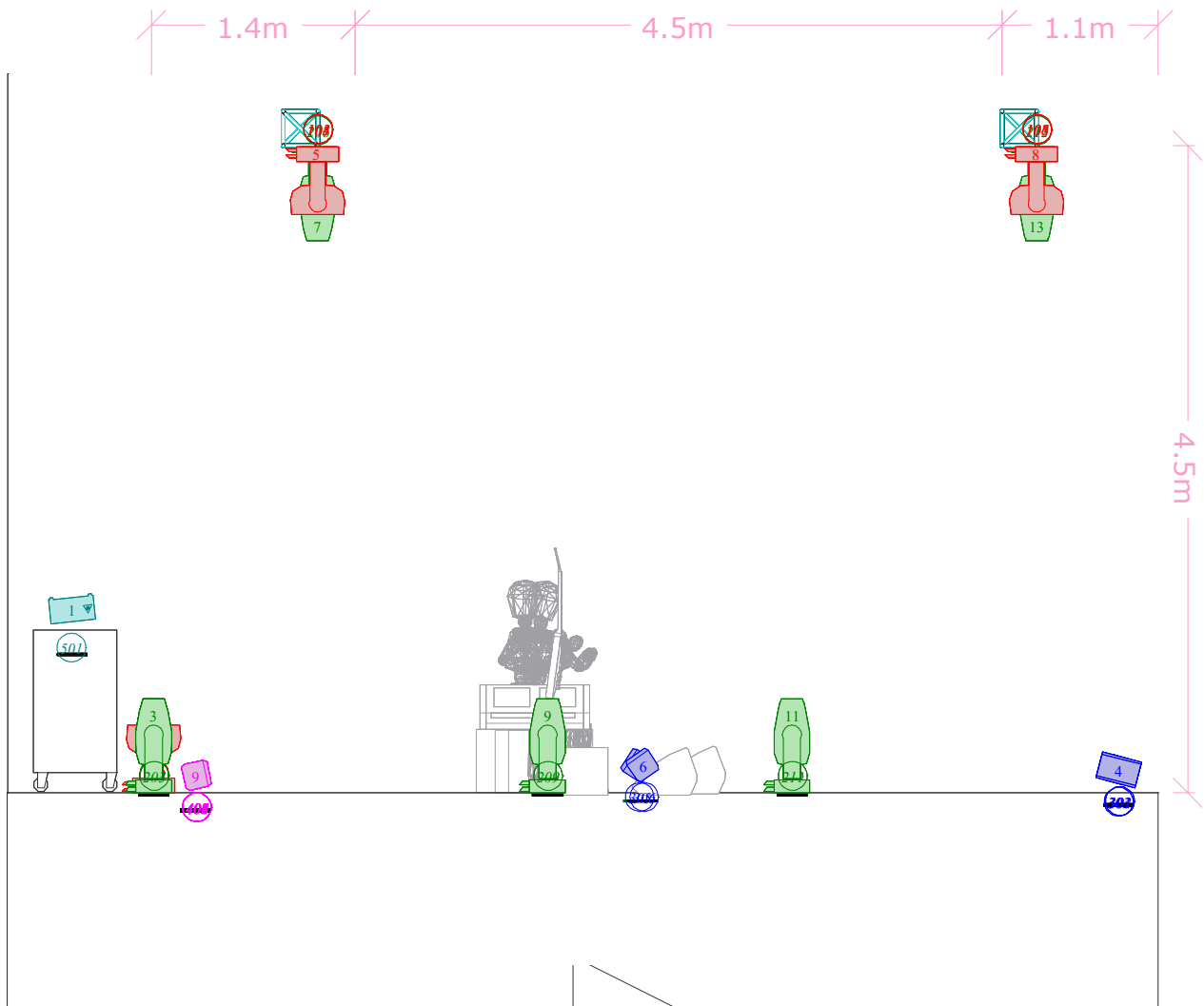
The lights of the Agua Dulce show are presented in five sections.

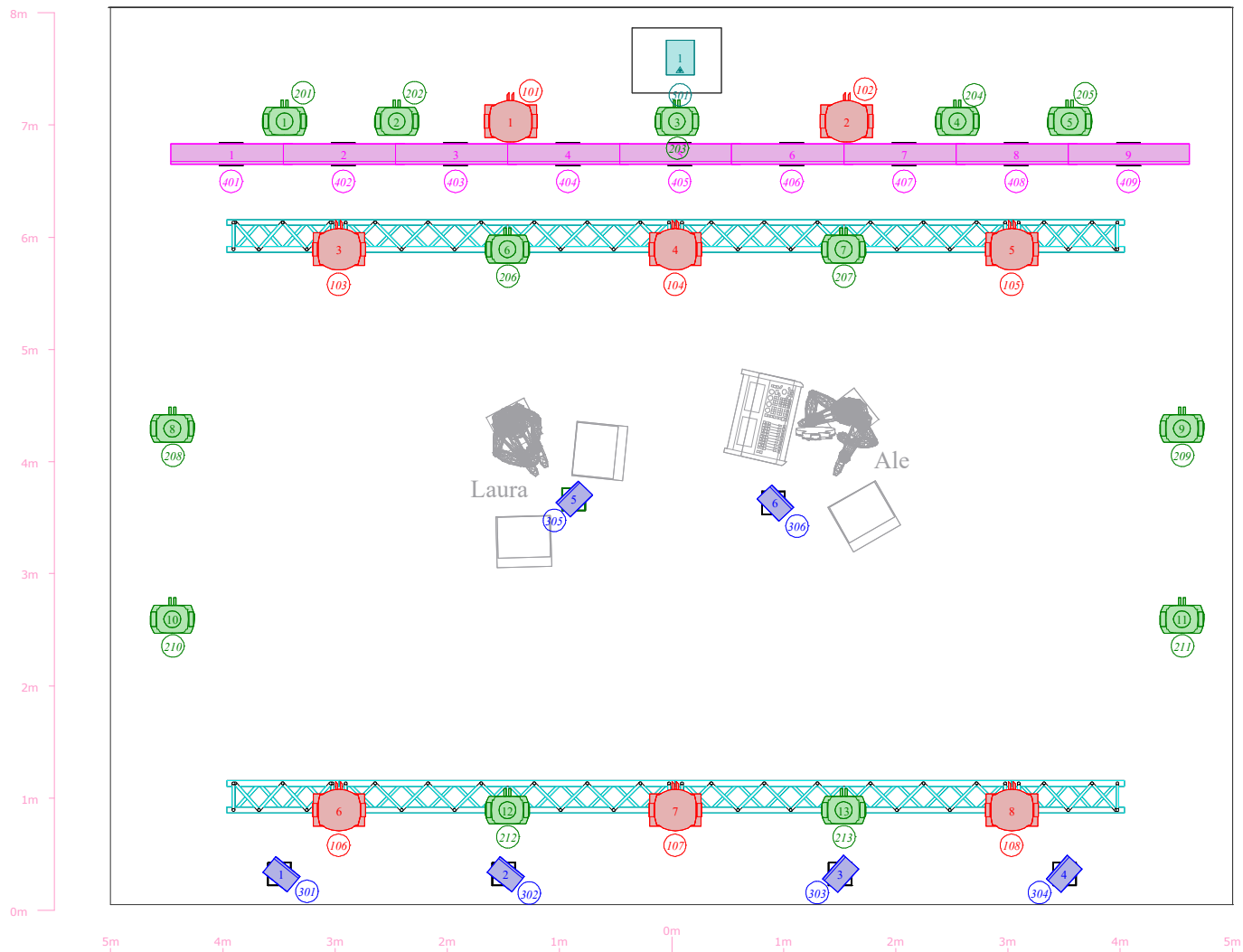
From now on we propose some basic configurations that can be interpreted by the lighting technician in charge, respecting the sections and moods of each one, as well as the main positions of the lights and desired colors.

We understand that it is not always possible to follow these configurations to their full extent, and we are fine if the moods of each section are being followed and adapted to the extent that is possible :)







Detailed cues are included as the perfect scenario.

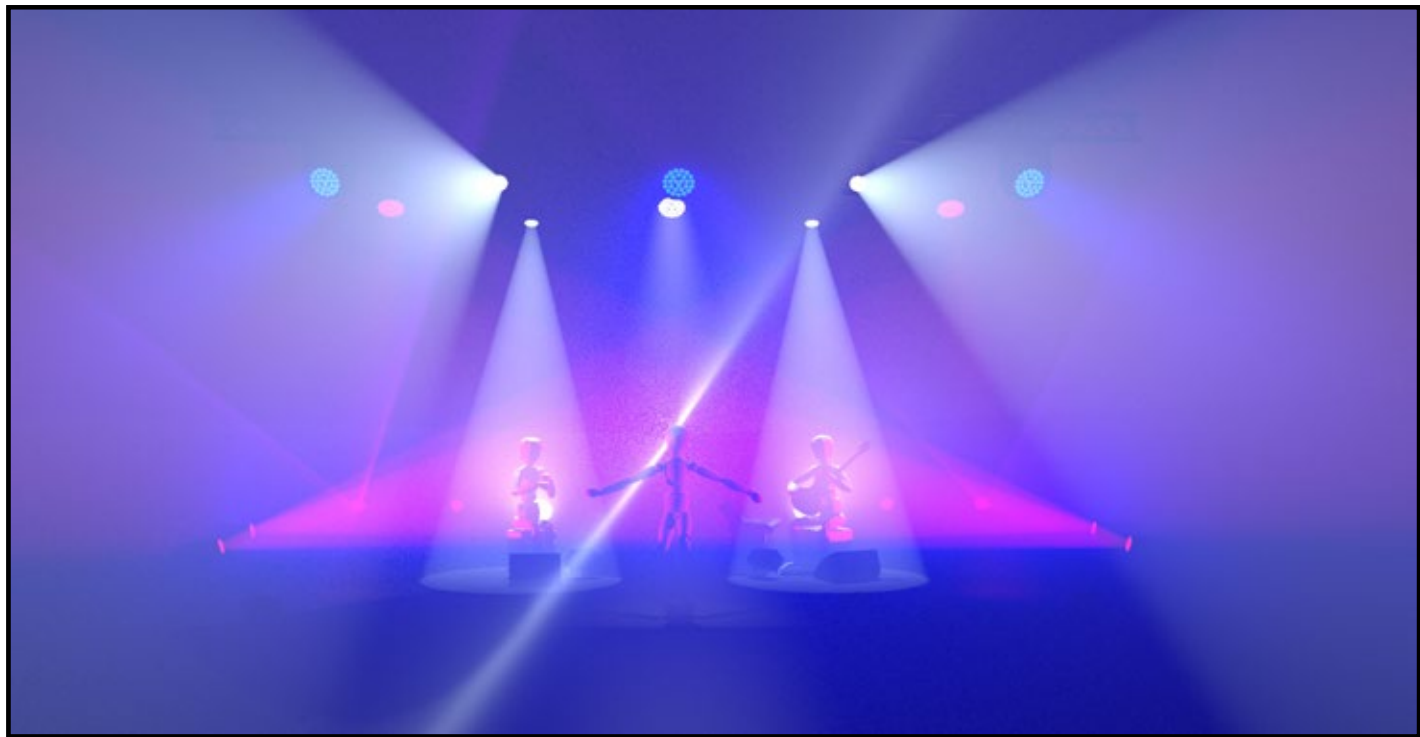
After the soundcheck we will be happy if we could have 15 min to check out how each of the 5 sections will look.





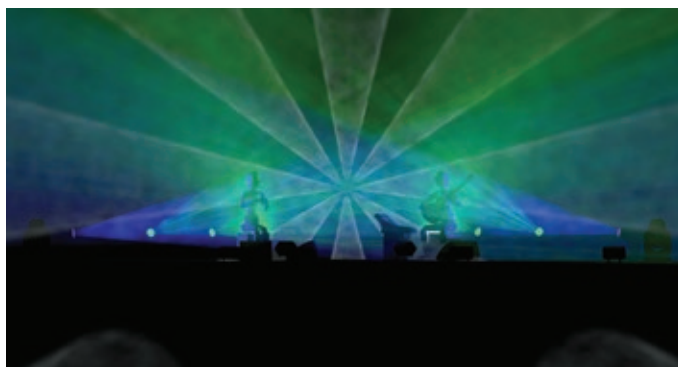
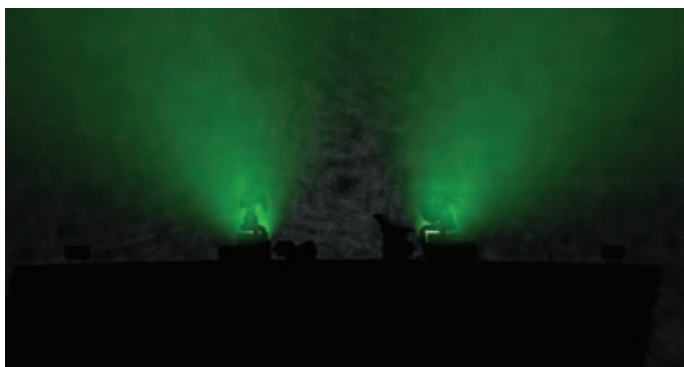
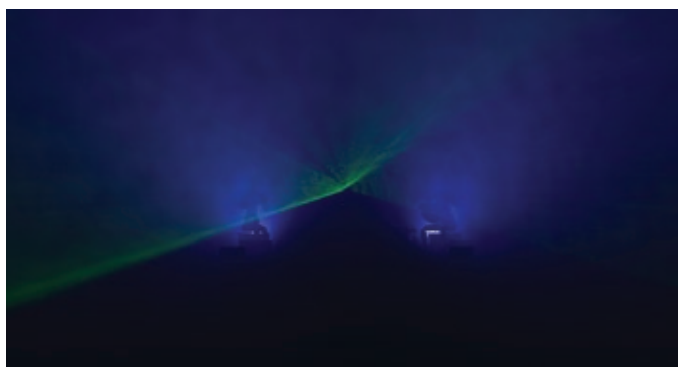
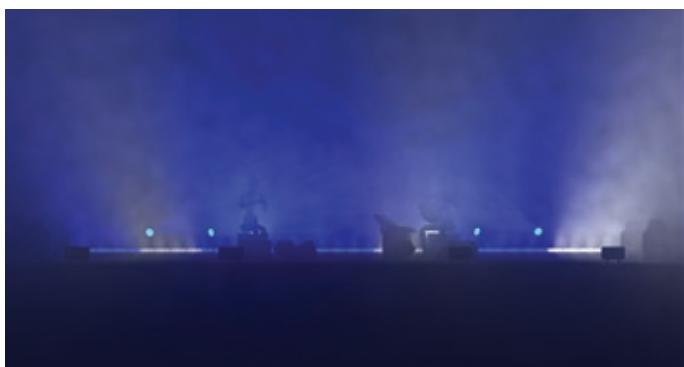
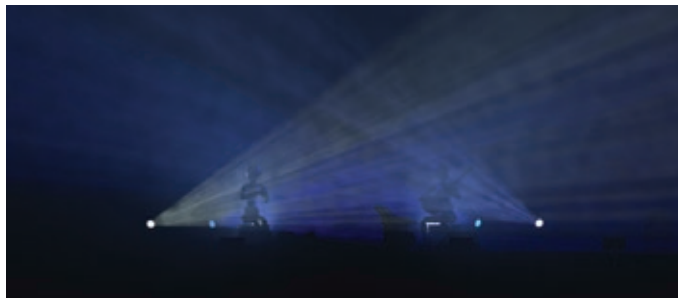
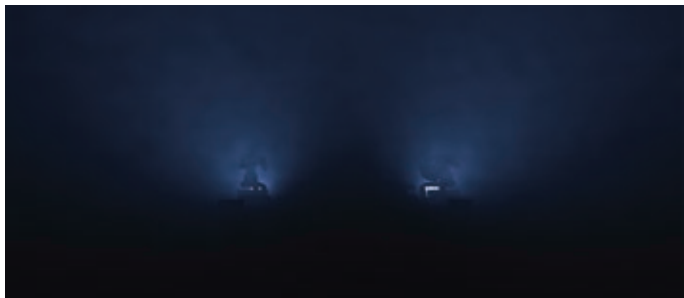
Equipment lighting

Symbol	Name	Count	Lens
	Maverick MK2 Spot	13	
	Lustr 11"	4	V60H60
	Lustr 11"	2	V80
	Lustr 42"	9	V60
	Maverick MK3 Wash	8	
	Kvant Clubmax 6000	1	



PART I (Mistery) Songs: Lamento, Huayco. Duration: 12 min

- Begin with atmosphere with subtle lighting and Haze (Color CTB - L200 / gobo pattern / dimmer fx).
- As the intensity of the cajon increases, increase white light, strobe.
- By the end enviroment with green and blue with white laser cut (if available) with the noise music.
- End with blackout.

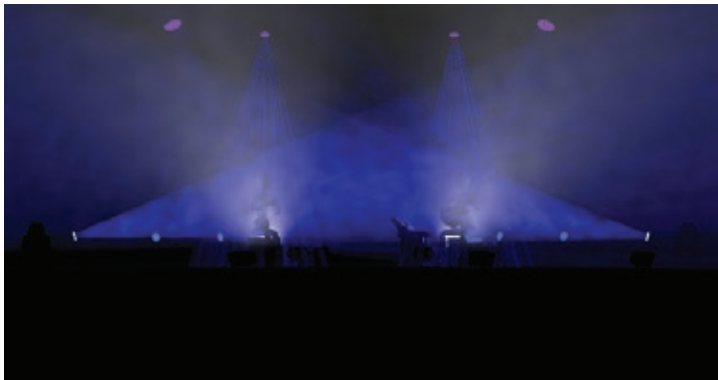
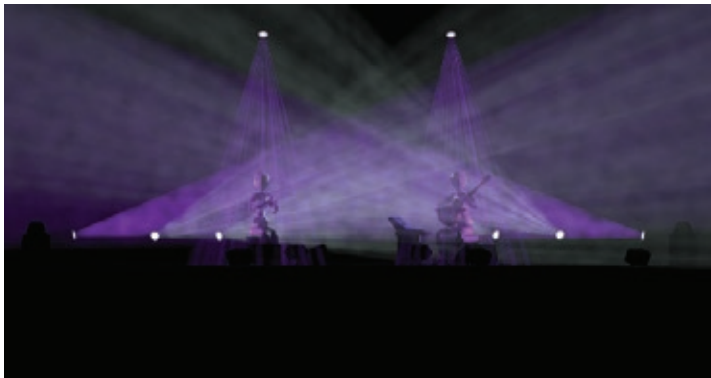


Detailed cues

Cue #	Label	Mood notes	Time	Technical notes
1	Sound / Intro	Ambiental mood, soft shadow of musicians show them the littel movements playing their instruments	00'10"	101+102 At 70% Color CTB (L200)/ Fog or Haze
2	Box noise		00'16"	201+202+204+205 At full Blue/ Gobo pattern
3	Ghost noise	Manual submaster (fader) in 3 musical sound frequencies with thoses patterns: IIII (x3 tones)II (x3 tones) II (x3) I.	1'43"	201+202+204+205 At full white in 3 submaster with 3 differents dimmer effects
4	Stop Ghost noise	Remnant of the previous cue bt un blue or dark light blue	2'44"	Similar to cue 2 but 201+202+204+205 at full blue with a ramdom dimmer effect.
5	Long chord in low sound	Long chord in low sound	3'06"	Strip light effect at 80% or full
6	Box speed change	As the intensity of the cajon increases, the intensity of the white light increases in strobe.	3'30"	401 thru 409 randoms strobe white/Blue effect (intensity dimmer growing)
7	Stop random strobe box	Everything stops, everithing turns blue	5'45"	401 thru 409 stop randoms strobe and 101+102 at blue color
8	Closed in musicians	Slowly becomes cue 1, may be whiter.	5'48"	Similar to cue 1
9	Laser chase	Select up to three or four different laser appearances between greens, blues and whites.	5'51"	501 AT 100% to green color and white
10	Box noise green	Keep the laser game going while the atmosphere turns green(Laser Tracking mode). Laser color white	8'00"	101+102 to green golor, 501 to white color
11	Box krechendo	Enviroment with green and blue with white laser cut. Play with the laser with the noise music.	8'26"	201+202+204+205 at full to green light
12	Apagon	Black out	10'00"	Black out

PART II (Focus) Songs: El fenómeno de la niña, Defensoras Morro . Dur: 10 min

- Begin with two focused spots from the top with white light, dark ambiance.
- Floor light illuminating faces with dark lavender.
- Dark Purple ambiance, followed by dark again.
- Dark blue, intensity dimmer growing. Floor lights, everything turns blue then white.



Detailed cues

Cue #	Label	Time	Technical notes	Mood notes
1	Intro	10'53"	206+207 at Full to white color	Ambiental mood, soft shadow of musicians show their subtle movements playing their instruments
2	Drums sound	11'00	305+306 at 45% to dark lavender.	Floor light illuminating faces. Just to illuminate the face
3	Voice "Por que cruzo los...."	12'24"	401 thru 409 at 100% to Dark Purple with sub master	Press submaster when the voice speaks
4	Instrumental deceleration	14'06"	Similar to cue 2 but 201+202+204+205 at full blue with a random dimmer effect.	Remnant of the previous cue bt un blue or dark light blue
5	Stop	14'14"	Similar to cue 1	Long chord in low sound
6	Musical purr	14'21"	301 thru 305 Flat strobe Dark Blue, same bpm (intensity dimmer growing).	Strobe executes by submaster only in the purr
7	Stop metalic sound	14'28"	401 thru 409 stop randoms strobe and 101+102 at blue color	Everything stops, everything turns blue
8	Krechendo	16'06"	Similar to cue 1	Slowly becomes cue 1, may be whiter.
9	Solo Laura y Ale	17'33"	101+102+404+405+406 at 100% to white light. 212+213 at 100% to white light.	Visible accent to Ale & Laura, the public wants to see how they play.
10	Creccendo percussion	18'55"	201+202+204+205+208+209 to white light at full.	more accent towards musicians
11	Black out	19'36"	All to 0%	Black out

PART III (Water) Song: Agua Dulce (Laura scrapes Cajon) Duration: 6 min

In this part Laura changes position and scrapes the cajon with a brush.
Feeling of water, sea colors (light blue or cyan with gobo). Front lights face with light greens.



Detailed cues

Cue #	Label	Time	Technical notes	Mood notes
1	Escena	20´01"	201+202+204+205+206+207 at 100% to light blue or cyan with gobo- Back light with 103+105 at full to color dark cyan. 305+306 at 80% to light green.	Mood in light patterns. Sea colors, front lights of musicians face with light greens.
2	Black out	24´35"	All to 0%	Black out

PART IV (Devil) Songs: Son de los diablos, Fuga en Alcatraz. Duration: 11 min

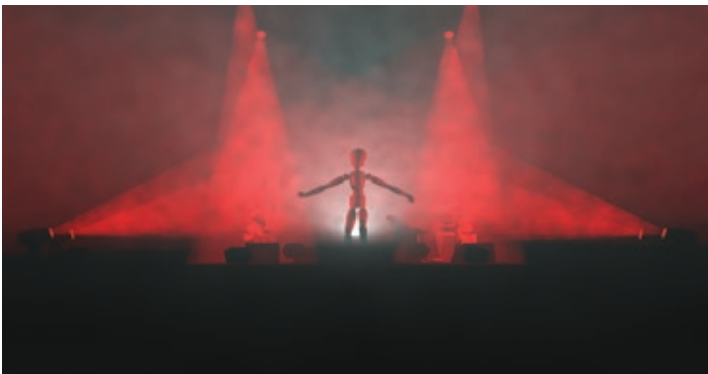
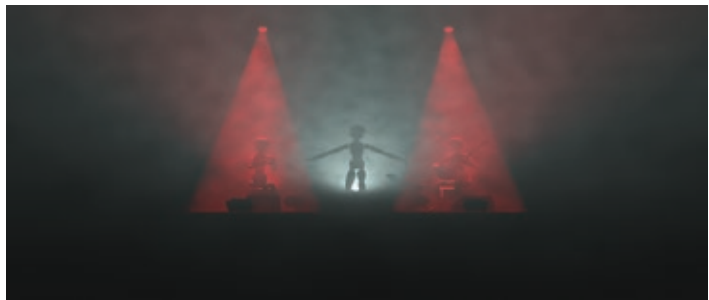
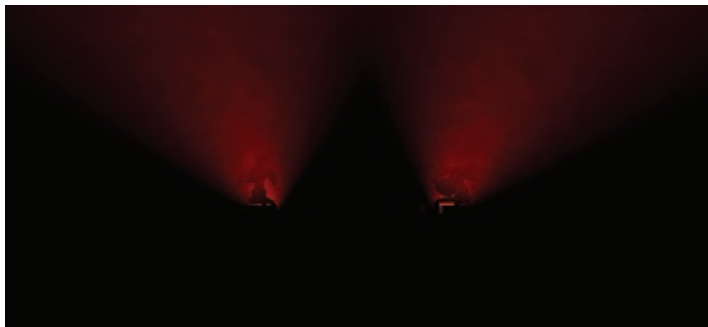
This is the most intense part of the show. Sometimes we perform with a dancer. If this is not previously agreed upon, please ignore all the lights that belong to the dancer.

Red color with fog, begin with ambiental mood.

Floor light white behind the dancer.

Sometimes focus only in dancer with top white light.

By the middle start laser effects from less to more.



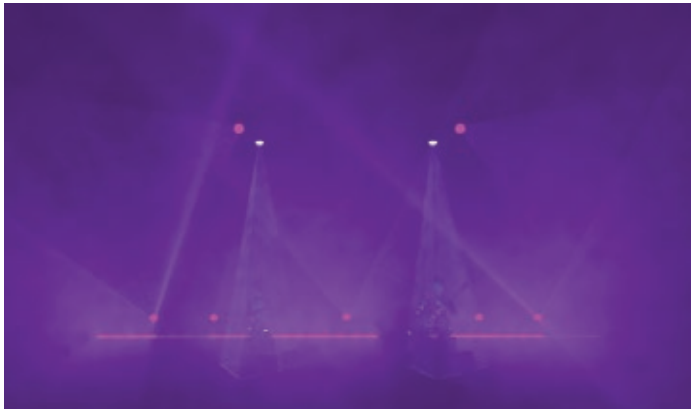
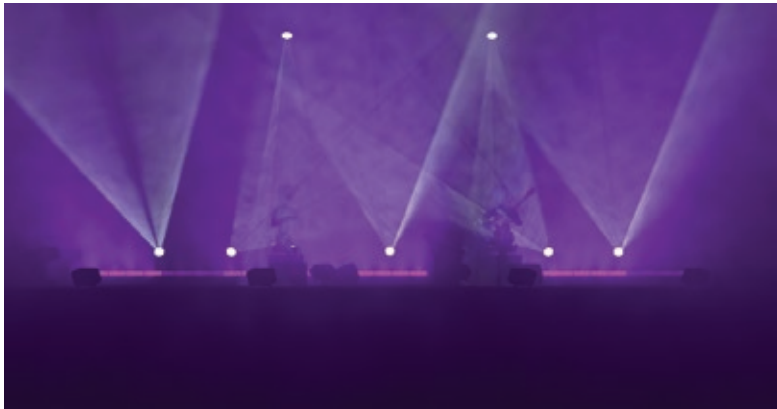
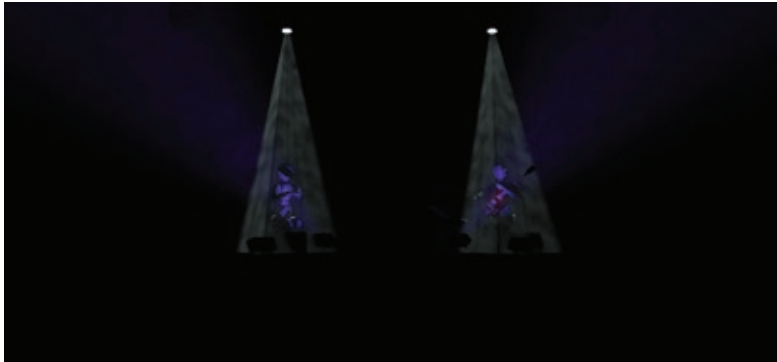
Detailed cues

Cue #	Label	Time	Technical notes	Mood notes
1	Intro	25´05"	101+102 At 100% Color red, Fog or Haze	Ambiental mood, soft shadow of musicians show their little movements playing their instruments
2	Sound peruvian box/ dancer	25´19"	206+207+212+213 at full to red color. 203 at 70% to white wide flood zoom.	Dancer appears in the center
3	Bass sounds	25´54"	208 thru 211 at full to red color.	Dancer advances for seriuos sounds series
4	Stop sound - shout	16´39"	104 at full to white color	shout only accent white
5	Bass sounds	26´42"	208 thru 211 at full to red color.	Dancer dances in proscenium
6	Stop	28´01"	104+203 at full to whote color.	Stop all
7	Cotinuuous sound - laser	28´06"	501 at full color white . Horizontal line m,oving slowly up and down.	Starts laser effects from less to more
8	Sound peruvian box	28´42"	103 thru 105, 206+207 at full to red. 106 thru 108 at full red with movement to audience and 212+213 at full to white focus to Ale & Laura zoom in.	Visibility for musicians continues laser effect
9	out peruvian box	33´08"	401 thru 409 at full to red, 104 at full zoom in 40%, white color.	out laser
10	Apagon	35´27"	Black out	Black out

PART V (End) Songs: Calato + Improv. Duration: 5 min

This is a slowly coming down part that ends the show.

- Begin with two focused spots from the top with white light, dark ambiance.
- Crossing of lights towards the public forming volumes that cut the environment.
- Dark Purple effect dimmer spread slow.



Detailed cues

Cue #	Label	Time	Technical notes	Mood notes
1	Intro	35'44"	206+207 at Full to white color with gobo circular or other geometric.305+306 at 80% to dark lavender.	Musicians accent white light tube and color interior.
2	Cajon slowly environmental	35'58"	All spot at Full to white color with gobo circular or other geometric, focus to the audience see figure.	Crossing of lights towards the public forming volumes that cut the environment.
3	Music change	12'24"	401 thru 409 at 100% to Dark Purple effect dimmer spread slow.	new mood
4	Black out	19'36"	All to 0%	Black out

THANK YOU

AGUA DULCE TECHNICAL DATA

Spot	Manufacturer	Type	Purpose	Unit	Position
101	Chauvet	Maverick MK3 Wash	Effect Wash light floor Laura	1	Piso
101	Chauvet	Maverick MK3 Wash	Effect Wash light floor Laura	1	Piso
102	Chauvet	Maverick MK3 Wash	Effect Wash light floor Ale	2	Piso
102	Chauvet	Maverick MK3 Wash	Effect Wash light floor Ale	2	Piso
102	Chauvet	Maverick MK3 Wash	Effect Wash light floor Dancer	2	Piso
102	Chauvet	Maverick MK3 Wash	Effect Wash light floor Dancer	2	Piso
103	Chauvet	Maverick MK3 Wash	Back light wash general and Laura	3	Truss Back light
103	Chauvet	Maverick MK3 Wash	Back light wash general and Laura	3	Truss Back light
104	Chauvet	Maverick MK3 Wash	Back light general and dancer	4	Truss Back light
104	Chauvet	Maverick MK3 Wash	Back light general and dancer	4	Truss Back light
105	Chauvet	Maverick MK3 Wash	Back light wash general and Ale	5	Truss Back light
105	Chauvet	Maverick MK3 Wash	Back light wash general and Ale	5	Truss Back light
106	Chauvet	Maverick MK3 Wash	Front light general	6	Truss Frontal light
106	Chauvet	Maverick MK3 Wash	Front light general	6	Truss Frontal light
107	Chauvet	Maverick MK3 Wash	Front light general	7	Truss Frontal light
107	Chauvet	Maverick MK3 Wash	Front light general	7	Truss Frontal light
108	Chauvet	Maverick MK3 Wash	Front light general	8	Truss Frontal light
108	Chauvet	Maverick MK3 Wash	Front light general	8	Truss Frontal light
201	Chauvet	Maverick MK2 Spot	Effect spot light floor Effect/ Laura	1	Piso
202	Chauvet	Maverick MK2 Spot	Effect spot light floor Effect/ Laura	2	Piso
203	Chauvet	Maverick MK2 Spot	Effect spot light floor centro	3	Piso
204	Chauvet	Maverick MK2 Spot	Effect spot light floor Effect/ Ale	4	Piso
205	Chauvet	Maverick MK2 Spot	Effect spot light floor Effect/ Ale	5	Piso
206	Chauvet	Maverick MK2 Spot	Back light spot general and Laura	6	Truss Back light
207	Chauvet	Maverick MK2 Spot	Back light spot general and Ale	7	Truss Back light
208	Chauvet	Maverick MK2 Spot	Side light band & effects	8	Piso
209	Chauvet	Maverick MK2 Spot	Side light band & effects	9	Piso
210	Chauvet	Maverick MK2 Spot	Side light dancer & effects	10	Piso
211	Chauvet	Maverick MK2 Spot	Side light dancer & effects	11	Piso
212	Chauvet	Maverick MK2 Spot	Front light spot Ale	12	Truss Frontal light
213	Chauvet	Maverick MK2 Spot	Front light spot Laura	13	Truss Frontal light
301	ETC	Lustr 11"	Floor light proscenium	1	Piso
302	ETC	Lustr 11"	Floor light proscenium	2	Piso
303	ETC	Lustr 11"	Floor light proscenium	3	Piso
304	ETC	Lustr 11"	Floor light proscenium	4	Piso
305	ETC	Lustr 11"	Piso Laura	5	Piso
306	ETC	Lustr 11"	Piso Ale	6	Piso
401	ETC	Lustr 42"	Effect light line floor	1	Piso
401	ETC	Lustr 42"	Effect light line floor	1	Piso
401	ETC	Lustr 42"	Effect light line floor	1	Piso
401	ETC	Lustr 42"	Effect light line floor	1	Piso
402	ETC	Lustr 42"	Effect light line floor	2	Piso
402	ETC	Lustr 42"	Effect light line floor	2	Piso
402	ETC	Lustr 42"	Effect light line floor	2	Piso
402	ETC	Lustr 42"	Effect light line floor	2	Piso
403	ETC	Lustr 42"	Effect light line floor	3	Piso
403	ETC	Lustr 42"	Effect light line floor	3	Piso
403	ETC	Lustr 42"	Effect light line floor	3	Piso
403	ETC	Lustr 42"	Effect light line floor	3	Piso
404	ETC	Lustr 42"	Effect light line floor	4	Piso
404	ETC	Lustr 42"	Effect light line floor	4	Piso
404	ETC	Lustr 42"	Effect light line floor	4	Piso
404	ETC	Lustr 42"	Effect light line floor	4	Piso
405	ETC	Lustr 42"	Effect light line floor	5	Piso
405	ETC	Lustr 42"	Effect light line floor	5	Piso
405	ETC	Lustr 42"	Effect light line floor	5	Piso
405	ETC	Lustr 42"	Effect light line floor	5	Piso
406	ETC	Lustr 42"	Effect light line floor	6	Piso
406	ETC	Lustr 42"	Effect light line floor	6	Piso
406	ETC	Lustr 42"	Effect light line floor	6	Piso
406	ETC	Lustr 42"	Effect light line floor	6	Piso
407	ETC	Lustr 42"	Effect light line floor	7	Piso
407	ETC	Lustr 42"	Effect light line floor	7	Piso
407	ETC	Lustr 42"	Effect light line floor	7	Piso
407	ETC	Lustr 42"	Effect light line floor	7	Piso
408	ETC	Lustr 42"	Effect light line floor	8	Piso
408	ETC	Lustr 42"	Effect light line floor	8	Piso
408	ETC	Lustr 42"	Effect light line floor	8	Piso
408	ETC	Lustr 42"	Effect light line floor	8	Piso
409	ETC	Lustr 42"	Effect light line floor	9	Piso
409	ETC	Lustr 42"	Effect light line floor	9	Piso
409	ETC	Lustr 42"	Effect light line floor	9	Piso
409	ETC	Lustr 42"	Effect light line floor	9	Piso
501	Kvant	Kvant Clubmax 6000	Effect light	1	Piso